

2010 Annual Statistical Report



CITY OF MANASSAS POLICE DEPARTMENT

2009-2010 FACTS AT A GLANCE

PART I OFFENSES/SERIOUS AND VIOLENT CRIME -
12% decrease (1,102)

TOTAL PART I AND ALL OTHER OFFENSES -
7% decrease (4,327)

CALLS FOR SERVICE - 8% decrease (54,609)

OFFICER INITIATED CALLS - 13% decrease (31,357)

RESPONSE TIMES

Priority 1 - 0:22 second decrease

Priority 2 - 0:10 second decrease

Priority 3 - 1:09 second decrease

ARRESTS - 16% decrease (1,904)

Adult - 17% decrease (1,775)

Juvenile - 2% increase (129)

DOMESTIC REPORTS

Reports - 7% increase (663)

Arrests - 4% increase (145)

TRAFFIC TICKETS - 4% increase (5,670)

2010 ACCIDENTS

Most accidents - Monday 2:00 PM

Highest Intersection - Centreville Rd/Sudley Rd

Cause Factor - Did Not Have Right of Way

PARKING TICKETS - 17% decrease (5,795)

DUI - 20% decrease (137)

GRAFFITI - 37% decrease (63)

ANIMAL CONTROL

Complaints - 11% increase (1,504)

Officer Initiated Calls - 34% increase (272)

MOTOR CARRIER SAFETY

Total Inspections - 7% decrease (67)

Violations - 5% increase (43)

TABLE OF CONTENTS

A Message from the Chief	2
General Information	3
Offenses	4 - 6
Offense Maps	7 - 10
Calls for Service	11 - 12
Officer Initiated Calls	13
Response Times	14
Arrest Charges	15 - 16
Domestic Reports	17
Traffic Tickets	18
Accidents - Day of Week	19
Accidents - Time of Day	20
Accidents - Location	21
Accidents - Cause Factor	22
Parking Tickets	23
Driving Under the Influence (DUI)	24
Graffiti	25
Animal Control Office (ACO)	25
Motor Carrier Safety	26



OFFICE OF THE CHIEF OF POLICE

9518 Fairview Avenue
Manassas, Virginia 20110
Office (703) 257-8001
Fax (703) 368-6966
www.manassascity.org



Douglas W. Keen
Chief of Police

During the past year, the Manassas City Police Department continued to meet the emerging challenges of public safety in our community. The primary mission of our Department continues to be crime prevention while maintaining the excellent level of police services our residents and businesses have come to expect. To this end, attention will remain focused on promoting public safety through community policing and maintaining the excellent level of citizen participation throughout our communities.

It was another year of accomplishments and new endeavors that were coordinated and well managed. A new Computer Aided Dispatch/Records Management System (CAD/RMS) was installed. This new system includes a “police to citizen” module which allows our Department to share police activity information with our residents via the Internet. In addition to the CAD/RMS changes, we have reorganized and revamped our Community Policing Program to add additional sworn and non-sworn personnel to our Force.

The Manassas City Police Department has earned widespread respect and recognition for its accomplishments. In 2010, our Department achieved “FLAGSHIP” status through the Commission on Accreditation for Law Enforcement Agencies (CALEA), with a 100% compliance rate.

As Chief of Police, I can assure that this agency will continue to build upon a record of integrity and professionalism as we prepare to meet the demands and challenges of tomorrow. Lastly, I want to thank and commend the men and women of the Manassas City Police Department for their individual and collective efforts, hard work and contributions throughout the past year that allowed our Department to fulfill its mission, as well as having a seamless transition of leadership.



Sincerely,

Douglas W. Keen
Chief of Police

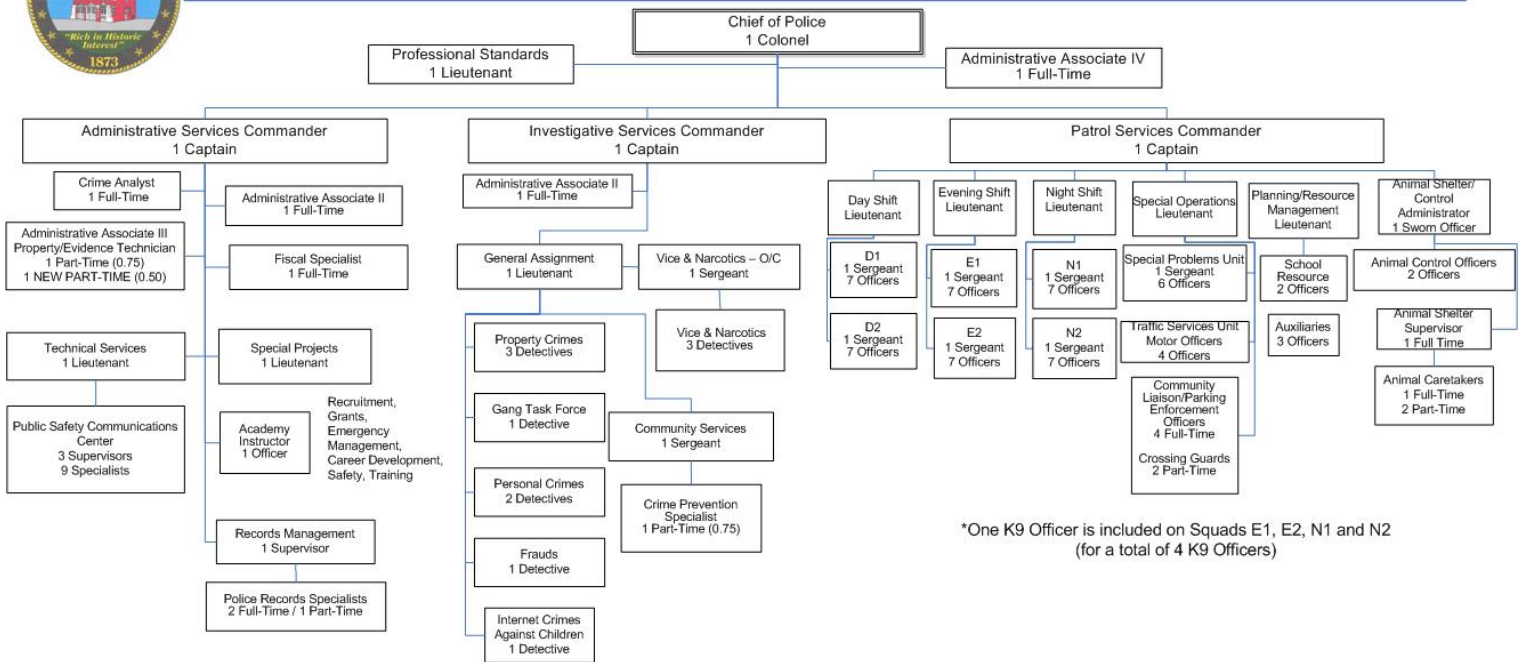
Police Department General Information



City of Manassas Police Department

Organizational Chart
FY 2011 Amended

Attachment "A"
General Order 1-5

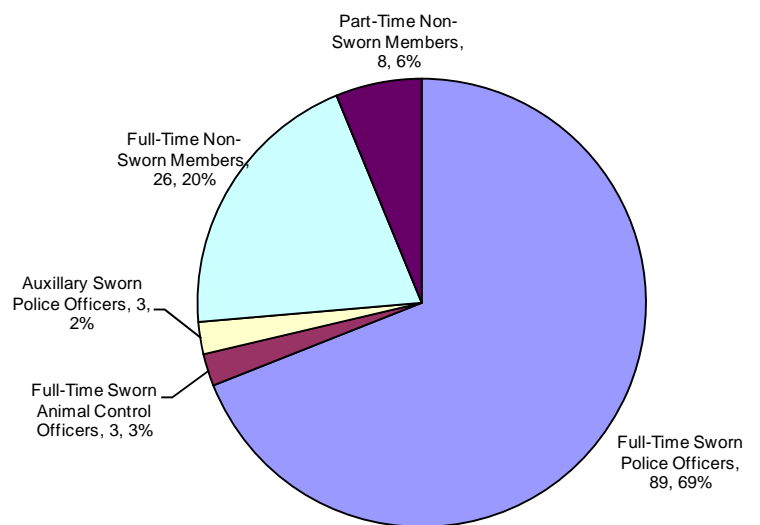


Updated: 03-01-2011

DEMOGRAPHICS

2010 Estimated City Population: 37821
 Land Area: 12 Square Miles
 Total MCPD Employees: 126
 Total Full-Time Sworn MCPD Employees: 92
 Sworn Employee Rate per 1,000 Inhabitants: 2.4

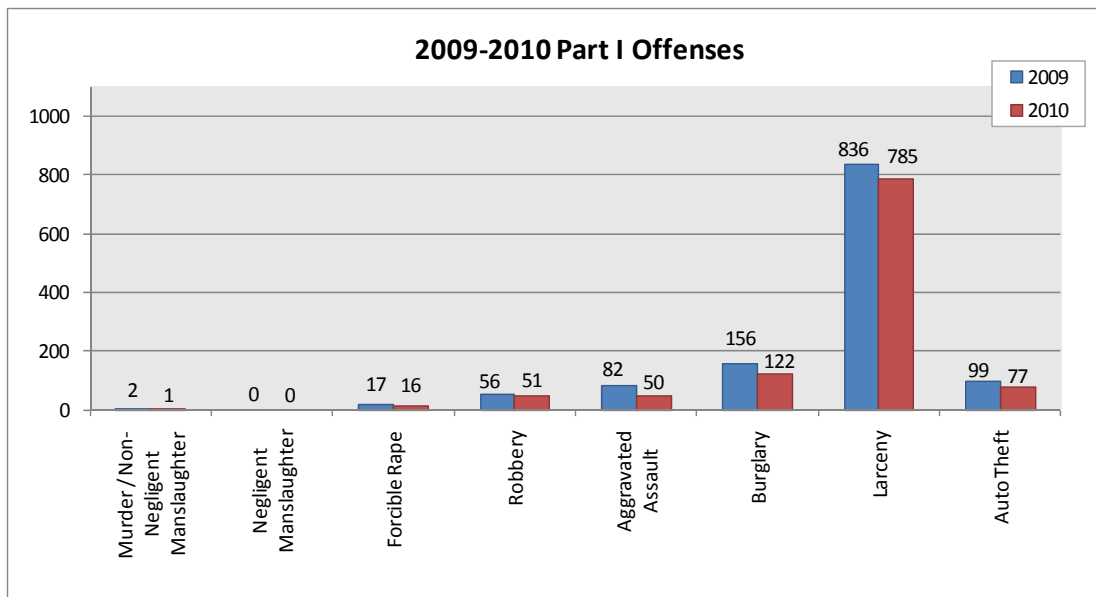
MCPD Authorized Strength



OFFENSES

SERIOUS AND VIOLENT CRIME	2006	2007	2008	2009	2010	Amt of Change 09-10	Rate of Change 09-10
Murder / Non- Negligent Manslaughter	2	2	4	2	1	-1	-50%
Negligent Manslaughter	0	0	0	0	0	0	NC
Forcible Rape	11	14	19	17	16	-1	-6%
Robbery	73	60	50	56	51	-5	-9%
Aggravated Assault	89	91	59	82	50	-32	-39%
Burglary	163	185	184	156	122	-34	-22%
Larceny	936	801	811	836	785	-51	-6%
Auto Theft	128	103	92	99	77	-22	-22%
Part I Offenses	1402	1256	1219	1248	1102	-146	-12%
5 - YEAR AVERAGE OF PART I OFFENSES:							1245
Simple Assault	302	255	280	251	514	263	105%
Other IBR Offenses	3313	3145	2865	3160	2711	-449	-14%
TOTAL OFFENSES	5017	4656	4364	4659	4327	-332	-7%
5 - YEAR AVERAGE OF OFFENSES EXCLUDING PART I OFFENSES:							3359

Caution is indicated in the interpretation of percentage changes. When dealing with small numbers, it must be remembered that small changes cause large percentage changes.



**OVERALL
CRIME
DECREASED BY
7% IN 2010.**

**SERIOUS AND
VIOLENT CRIME
DECREASED BY
12% IN 2010.**

The total number of offenses decreased from 4659 in 2009 to 4327 in 2010, which is a 7% (332) decrease.

The largest offense type **decrease** is Murder/Non-Negligent Manslaughter which decreased from 2 incidents in 2009 to 1 in 2010.

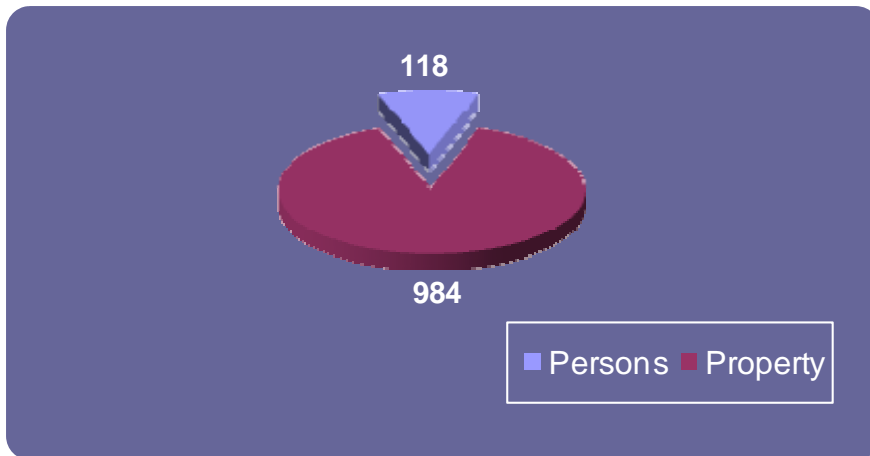
Crime **decreases** have also been noted in:

- ◆ Aggravated Assault 39%
- ◆ Burglary 22%
- ◆ Motor Vehicle Theft 22%
- ◆ Robbery 9%
- ◆ Larceny 6%
- ◆ Forcible Rape 6%

The only offense type **increase** is Simple Assault which increased from 251 to 514 incidents, 105%.

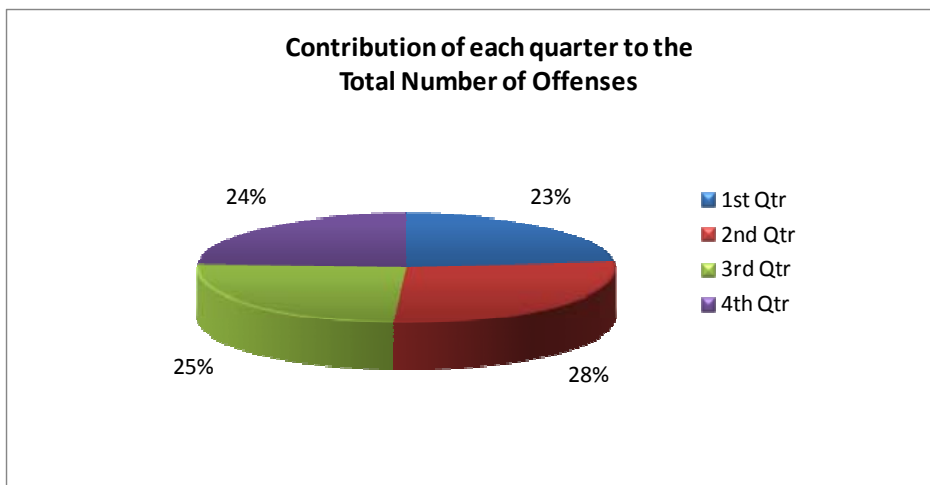
OFFENSES

Crimes Against Persons	2006	2007	2008	2009	2010	Amt of Change 09-10	Rate of Change 09-10
Murder	2	2	4	2	1	-1	-50%
Rape	11	14	19	17	16	-1	-6%
Robbery	73	60	50	56	51	-5	-9%
Aggravated Assault	89	91	59	82	50	-32	-39%
Total Crimes Against Persons	175	167	132	157	118	-39	-25%
Crimes Against Property	2006	2007	2008	2009	2010	Amt of Change 09-10	Rate of Change 09-10
Burglary	163	185	184	156	122	-34	-22%
Larceny	936	801	811	836	785	-51	-6%
Motor Vehicle Theft	128	103	92	99	77	-22	-22%
Total Crimes Against Property	1,227	1,089	1,087	1,091	984	-107	-10%
Total Part I Crimes	1402	1256	1219	1248	1102	-146	-12%



Property crimes make up 89% of all reported index crimes in Manassas City. Violent crimes constitute only 11% of index crimes.

2010 Offenses	
1st Qtr	1006
2nd Qtr	1201
3rd Qtr	1084
4th Qtr	1036



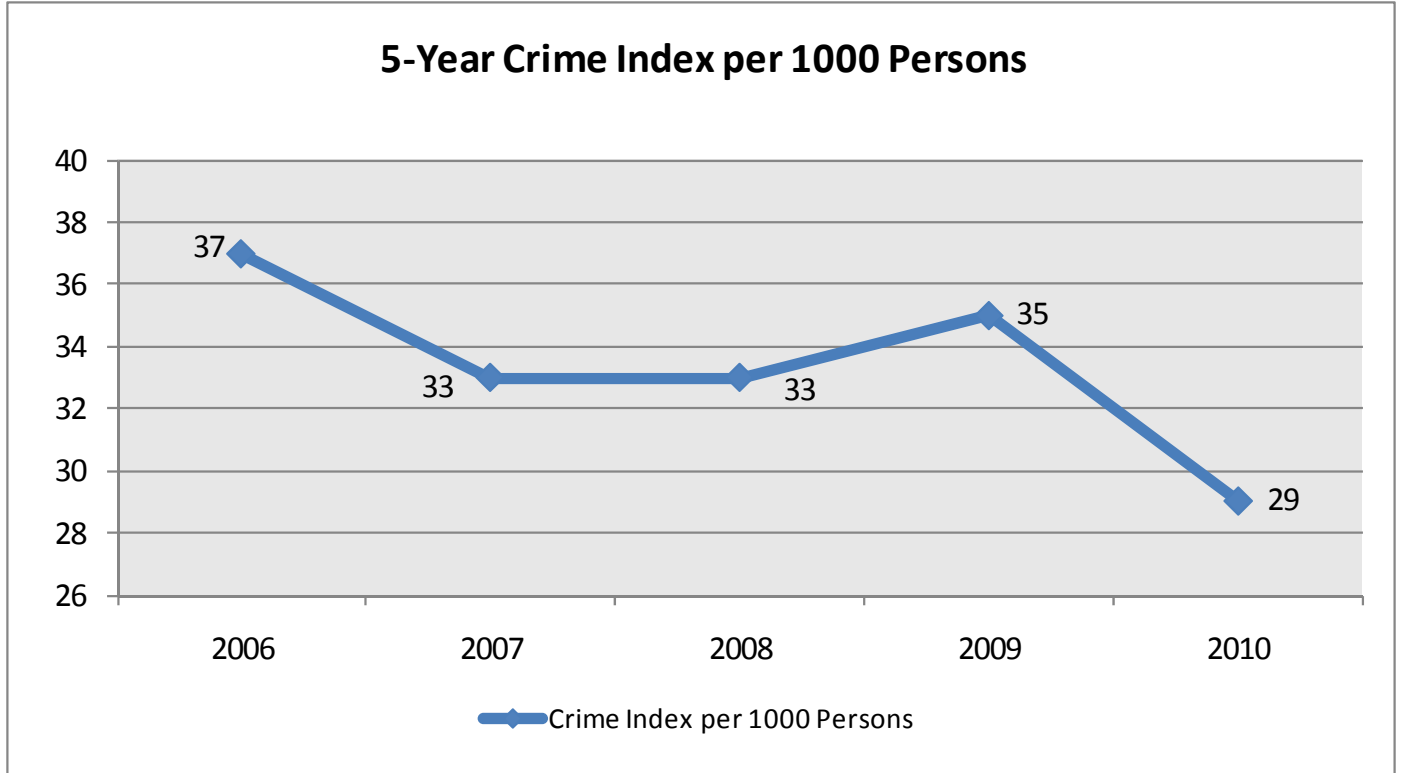
Of the 4327 offenses reported in 2010, the 2nd quarter reported the most number of offenses followed by the 3rd quarter. The percentage difference between these quarters was 3%. The 1st quarter reported the least number of offenses.

OFFENSES

	2006	2007	2008	2009	2010	Amt of Change 09-10	Rate of Change 09-10
ESTIMATED POPULATION¹	38066	38066	36666	35883	37821	1938	5%
Part I Offenses	1402	1256	1219	1248	1102	-146	-12%
Crime Index per 1000 Persons	37	33	33	35	29	-6	-16%

Based on Part I offenses, the 5-Year average Crime Index is 33 crimes per 1,000 persons. Based on 2010 Part I crimes, the ratio of crime to officers is 12 crimes to 1 officer.

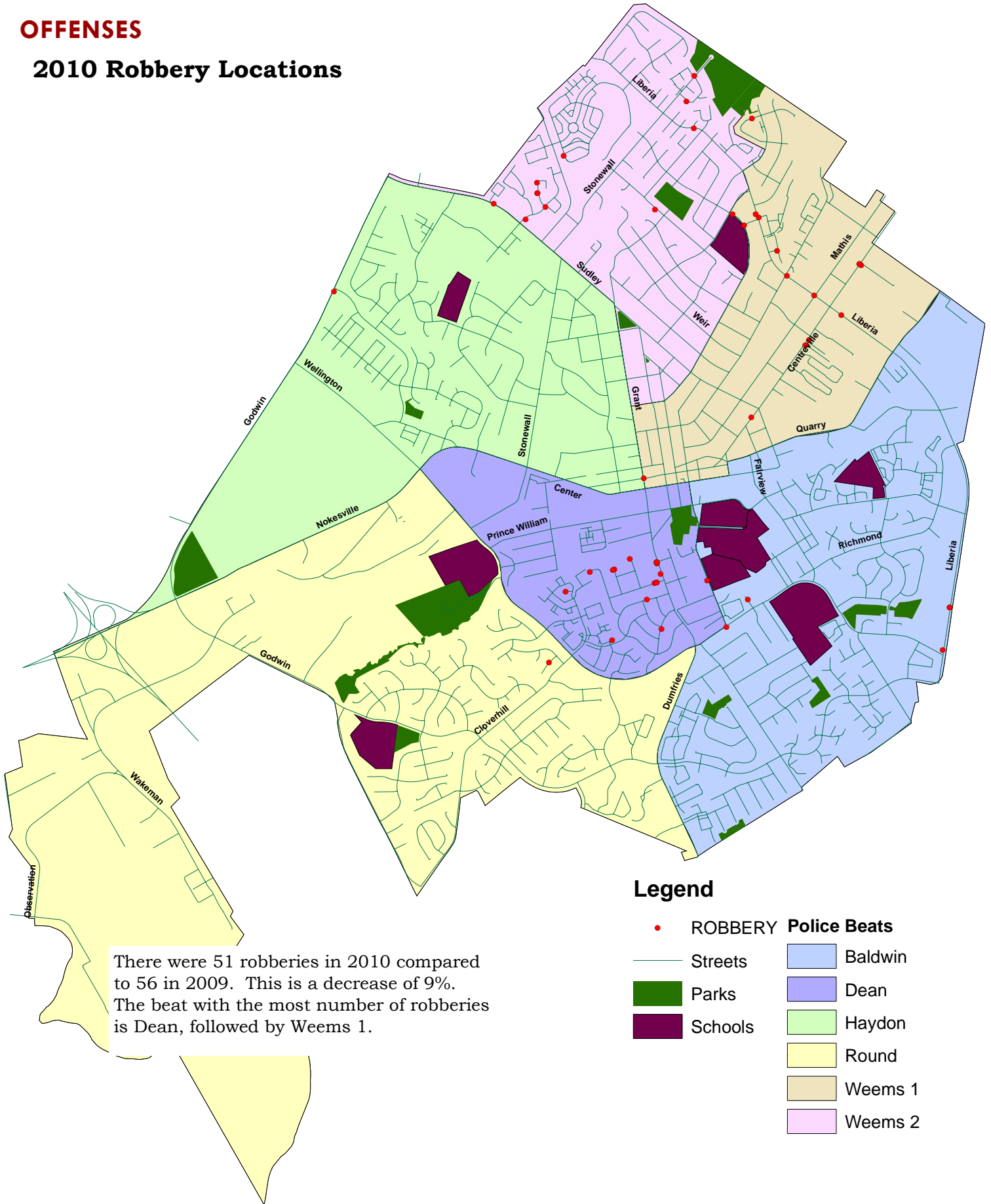
CRIME INDEX HAS DECREASED FROM 37 CRIMES PER 1000 PERSONS IN 2006 TO 29 CRIMES PER 1000 PERSONS IN 2010.



¹2010 Population Estimate: U.S. Census

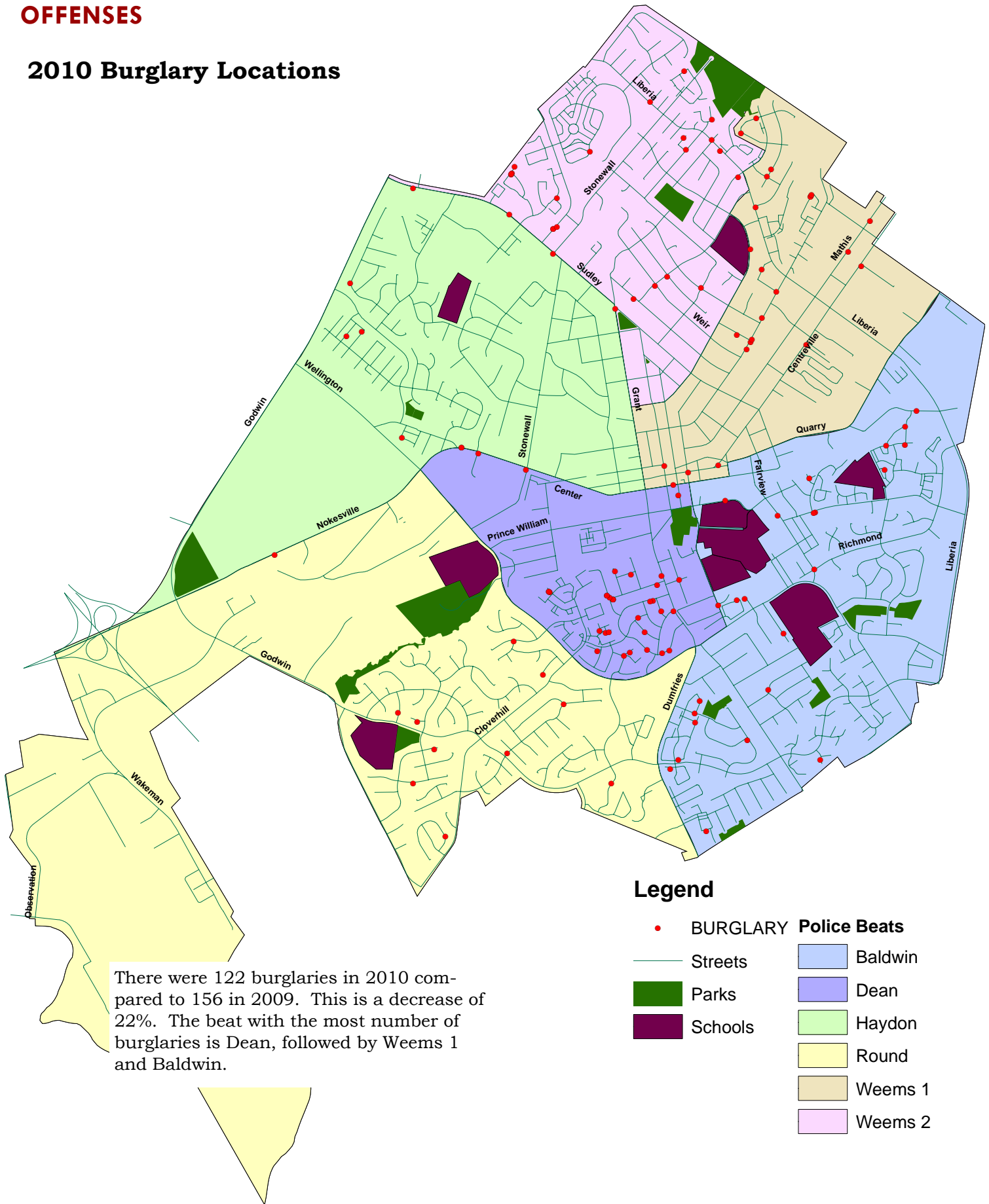
OFFENSES

2010 Robbery Locations



OFFENSES

2010 Burglary Locations



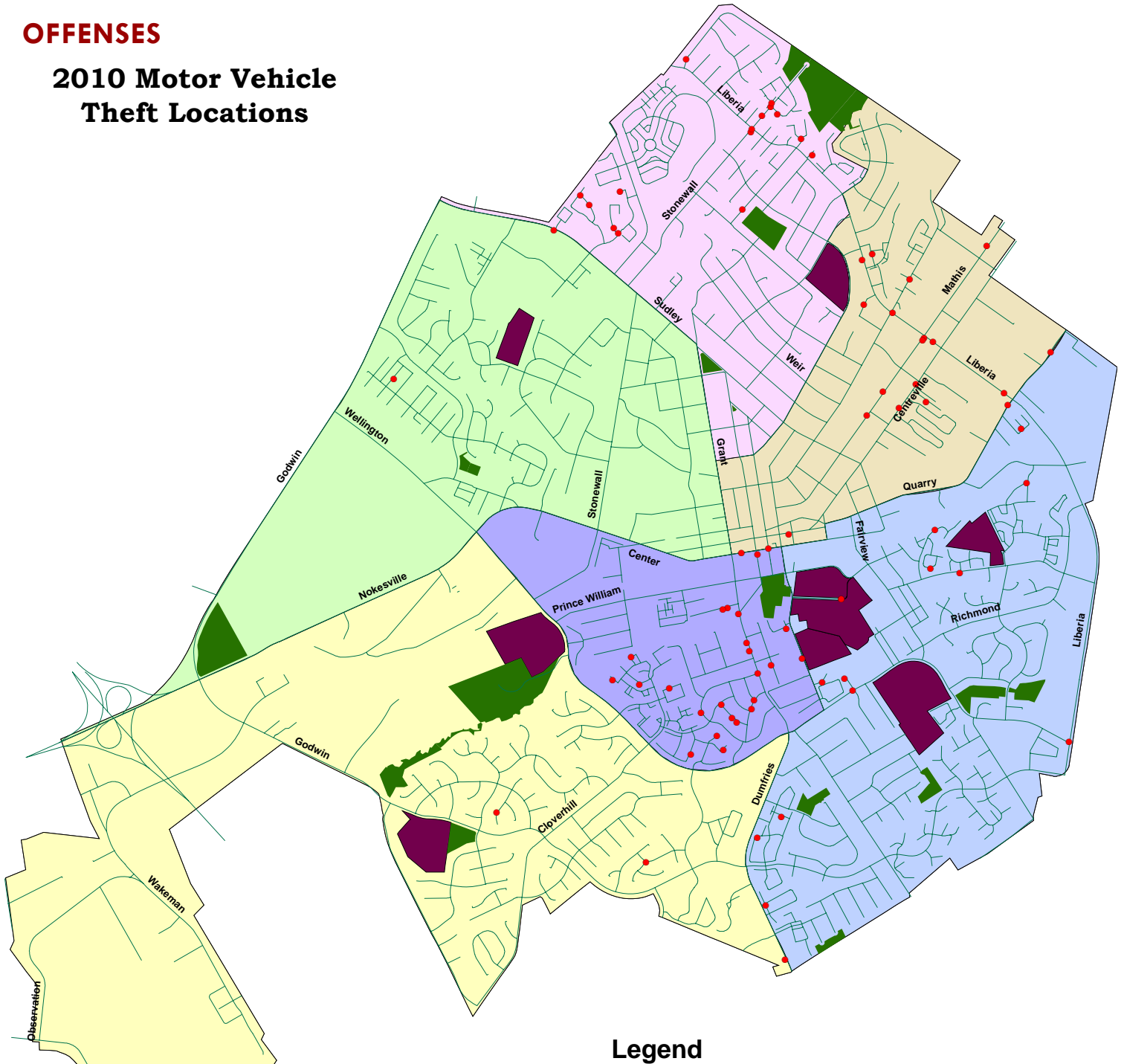
There were 122 burglaries in 2010 compared to 156 in 2009. This is a decrease of 22%. The beat with the most number of burglaries is Dean, followed by Weems 1 and Baldwin.

Legend

- BURGLARY
- Streets
- Parks
- Schools
- Baldwin
- Dean
- Haydon
- Round
- Weems 1
- Weems 2

OFFENSES

2010 Motor Vehicle Theft Locations



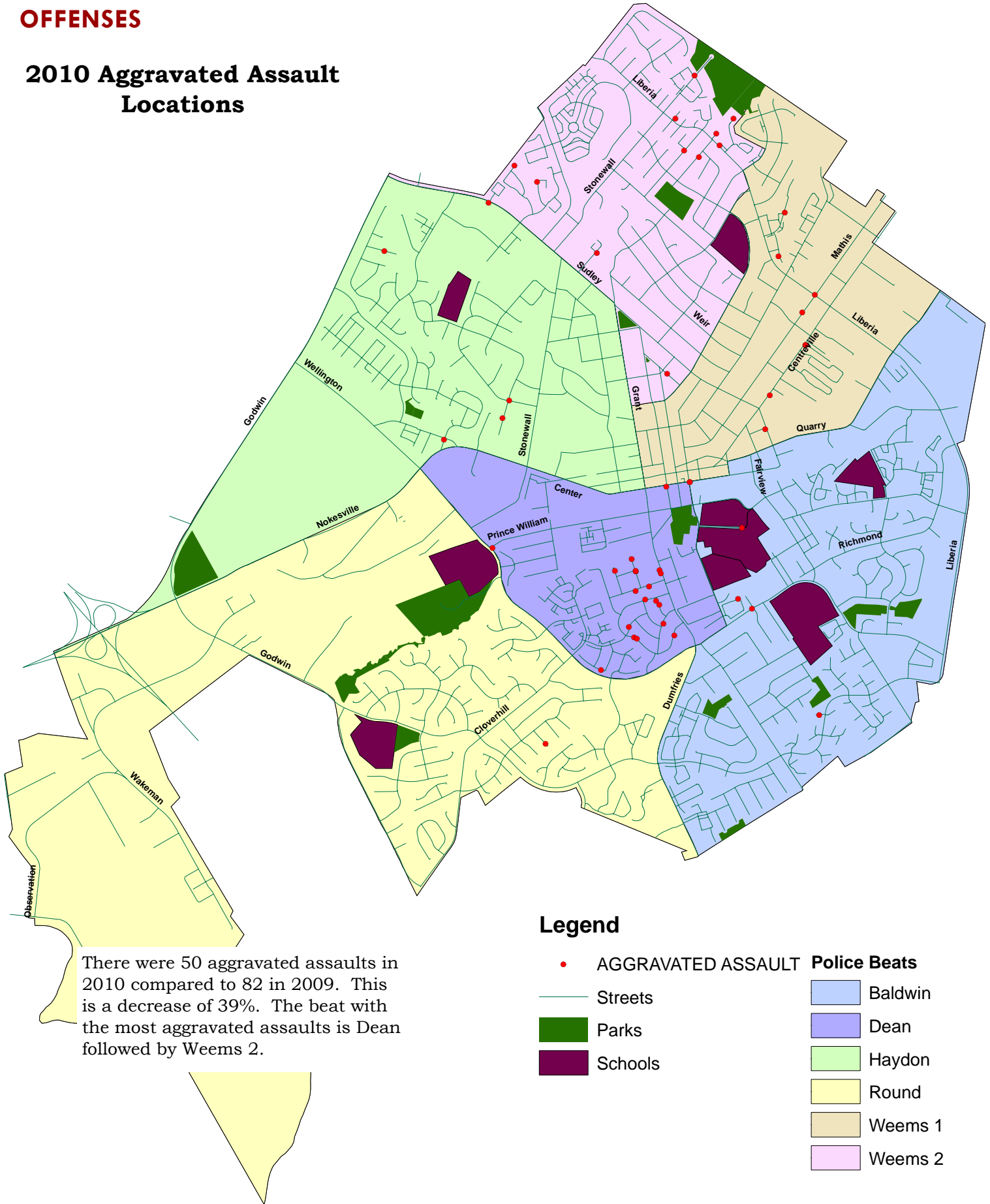
There were 77 motor vehicle thefts in 2010 compared to 99 in 2009. This is a decrease of 22%. The beat with the most number of motor vehicle thefts is Dean, followed by Weems 1.

Legend

- MOTOR VEHICLE THEFT
- Streets
- Parks
- Schools
- Police Beats**
- Baldwin
- Dean
- Haydon
- Round
- Weems 1
- Weems 2

OFFENSES

2010 Aggravated Assault Locations



There were 50 aggravated assaults in 2010 compared to 82 in 2009. This is a decrease of 39%. The beat with the most aggravated assaults is Dean followed by Weems 2.

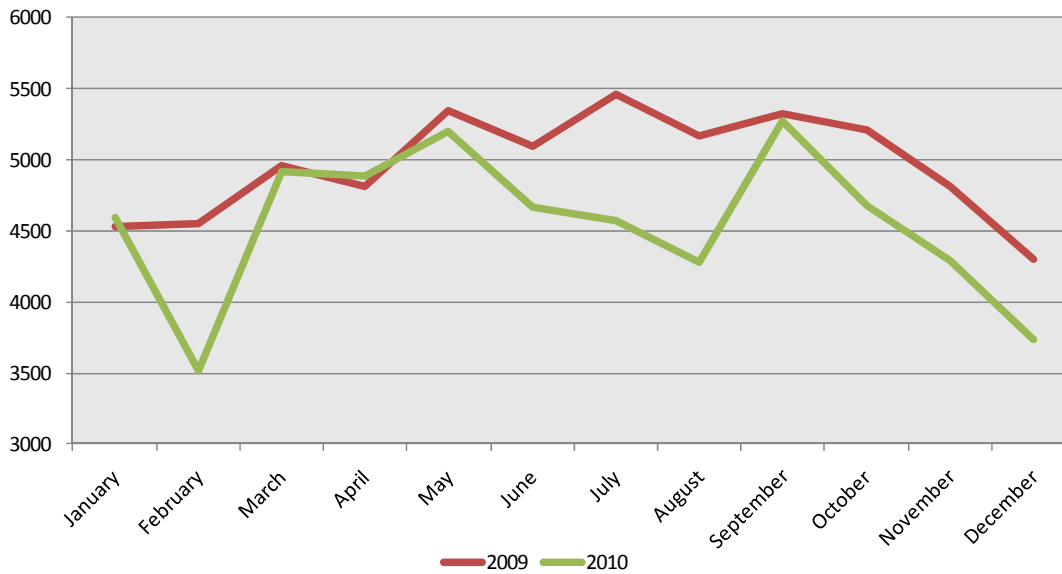
Legend

- AGGRAVATED ASSAULT
- Streets
- Parks
- Schools
- Police Beats
- Baldwin
- Dean
- Haydon
- Round
- Weems 1
- Weems 2

CALLS FOR SERVICE

	January	February	March	April	May	June	July	August	September	October	November	December	Total
2007	5126	4052	5307	4915	5751	4947	5387	5308	5412	5733	4961	4832	61731
2008	5024	4527	5603	5721	5776	5422	5529	4790	5344	5202	4387	4466	61791
2009	4535	4553	4962	4814	5342	5094	5464	5172	5321	5214	4813	4302	59586
2010	4596	3519	4916	4885	5204	4667	4569	4283	5269	4676	4286	3739	54609
4 Year Average													59429

2009 - 2010 Calls for Service Trend Line

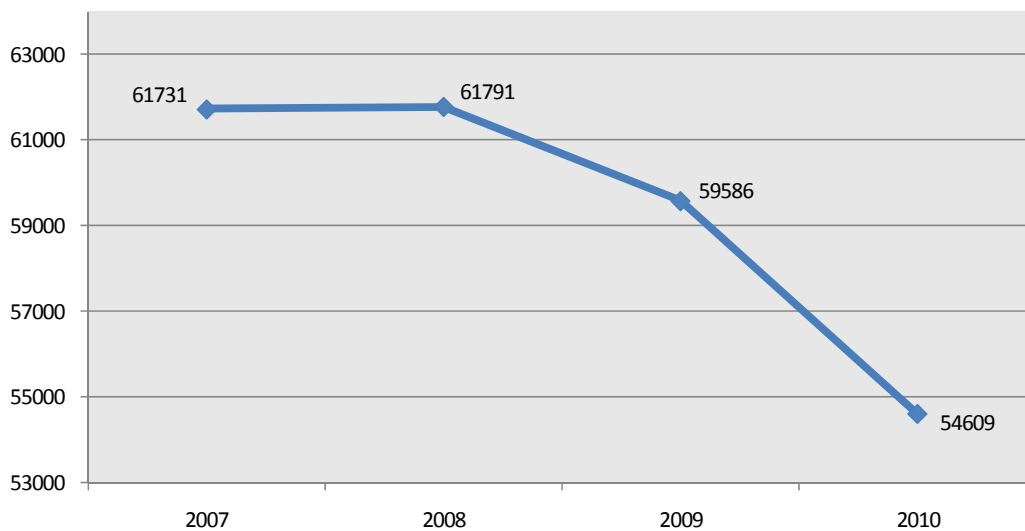


The number of calls for service decreased from 59586 in 2009 to 54609 in 2010, a decrease of 4,977 calls (8%).

2010 reported the highest number of calls for September, May and March.

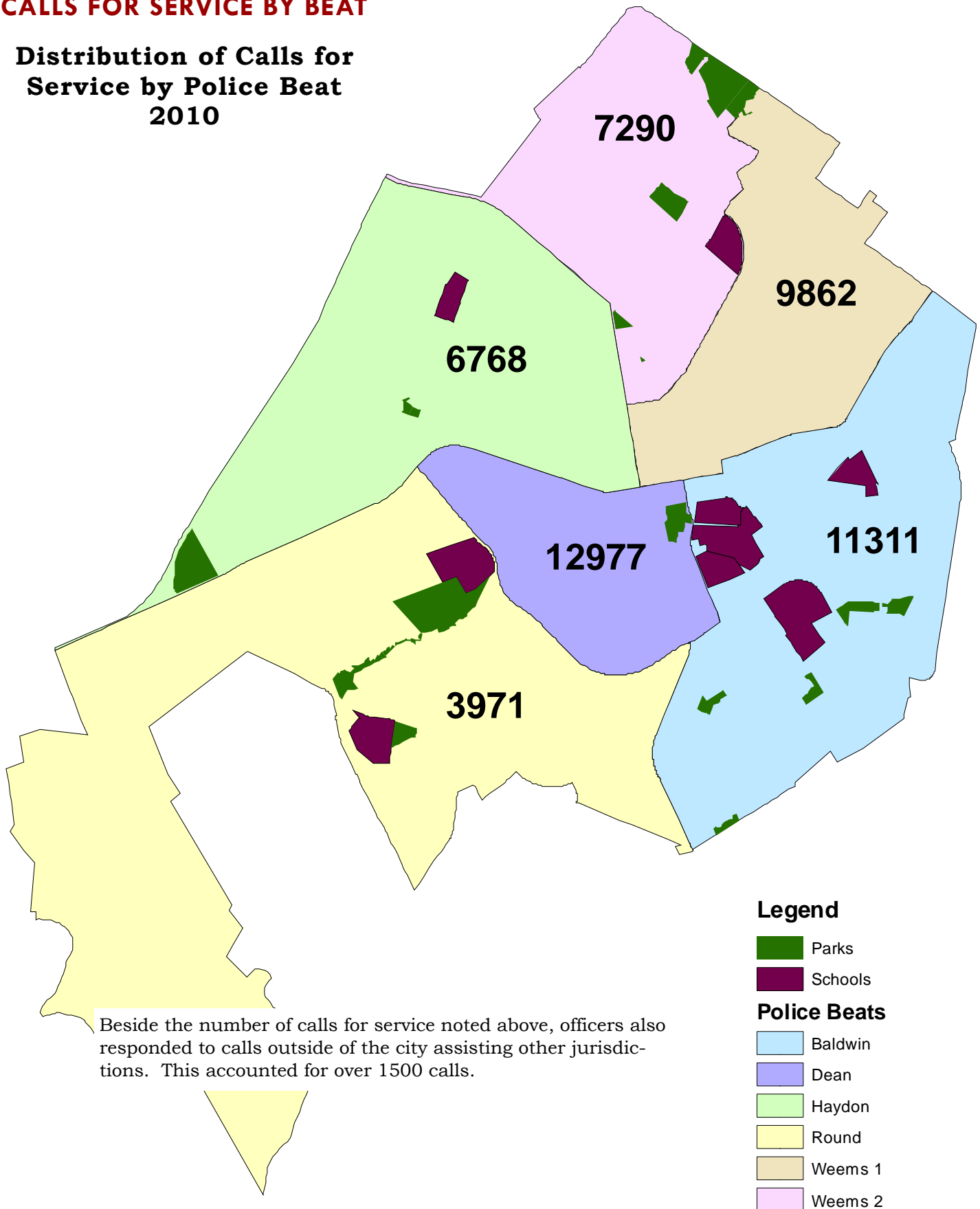
As seen from the 4-year trend line from 2007 to 2010 the number of calls for service has decreased. The 4-year Calls for Service average (2007 - 2010) is 59429. If this trend continues the number of calls for 2011 will be within the range of 56056 to 62802.

Calls for Service Trend Line 2007- 2010



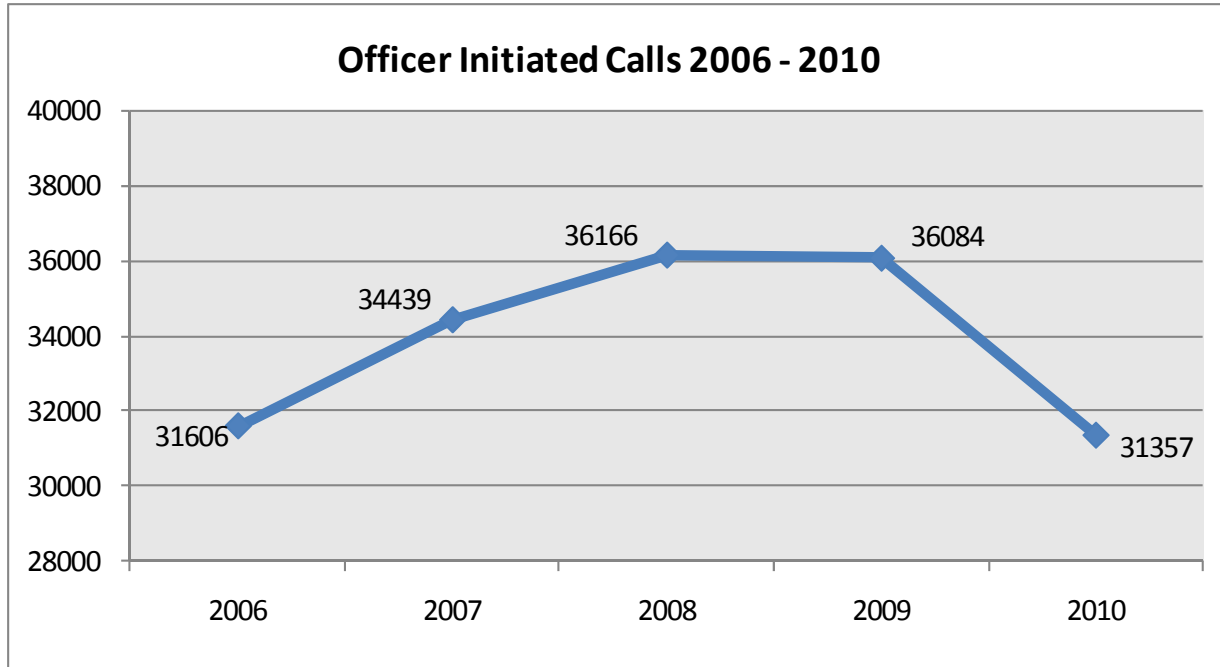
CALLS FOR SERVICE BY BEAT

Distribution of Calls for Service by Police Beat 2010



OFFICER INITIATED CALLS

2006	2007	2008	2009	2010	Amt of Change 09-10	Rate of Change 09-10
31606	34439	36166	36084	31357	-4727	-13%



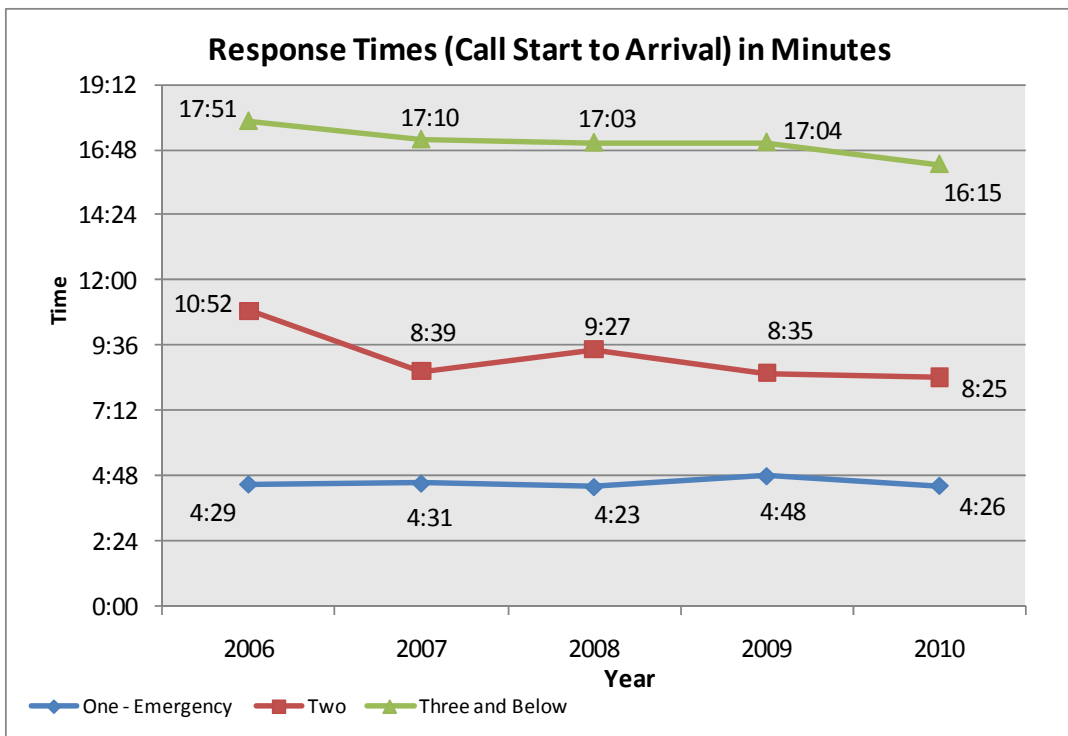
AN OFFICER INITIATED CALL IS ONE IN WHICH AN OFFICER TAKES PROACTIVE STEPS TO PREVENT OR INTERRUPT CRIME SUCH AS OBSERVING SUSPICIOUS ACTIVITY AND TAKING ACTION.

Officer initiated calls decreased by 4727 calls (13%), from 36084 in 2009 to 31357 in 2010.

The 5-year average of officer-initiated calls is 33930.

RESPONSE TIMES

Priority	2006	2007	2008	2009	2010	Amount of Change 09-10
One - Emergency	4:29	4:31	4:23	4:48	4:26	0:22 decrease
Two	10:52	8:39	9:27	8:35	8:25	0:10 decrease
Three and Below	17:51	17:10	17:03	17:04	16:15	1:09 decrease

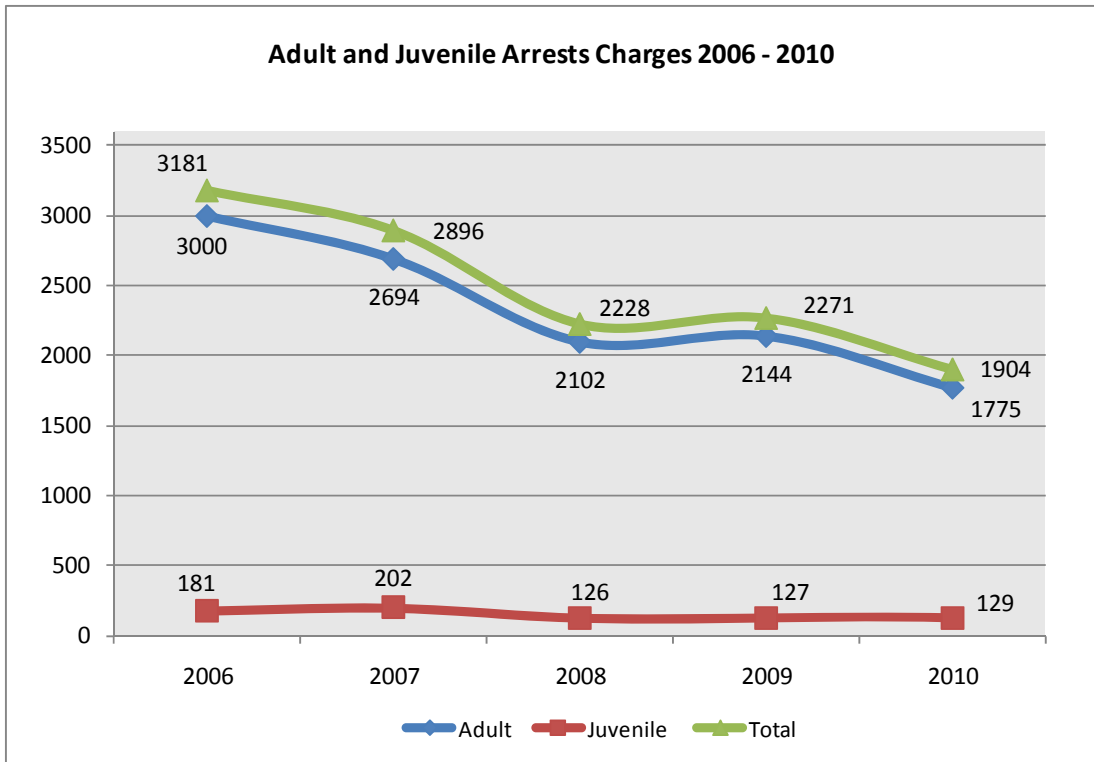


The time from call start to arrival of Priority 1 calls has decreased by 22 seconds in 2010 compared to 2009; Priority 2 calls decreased by 10 seconds and Priority 3 and below calls decreased by one minute, nine seconds.

The 5-year average time for a Priority 1 call is 4:31 minutes, priority 2 - 9:12 minutes and Priority 3 calls - 17:05 minutes.

ARREST CHARGES

	2006	2007	2008	2009	2010	Amt of Change 09-10	Rate of Change 09-10	2010 Persons Arrested
Adult	3000	2694	2102	2144	1775	-369	-17%	1330
Juvenile	181	202	126	127	129	2	2%	115
Total	3181	2896	2228	2271	1904	-367	-16%	1445



Offense	Arrest Charges	% of Total
Simple Assault	262	14%
DIP	207	11%
Drug/Narcotics Violations	161	8%
DUI	137	7%
Larceny	102	5%
Liquor Violations	69	4%
Disorderly Conduct	61	3%
Fraud	57	3%
Destruction/Damage/Vandalism	46	2%
Aggravated Assault/Malicious Wounding	40	2%
Burglary	32	2%
Weapons Violations	25	1%
Robbery	24	1%
Counterfeit/Forgery	24	1%
Motor Vehicle Theft	9	0%
Rape	5	0%
Murder	2	0%
Other	641	34%
Total	1904	100%

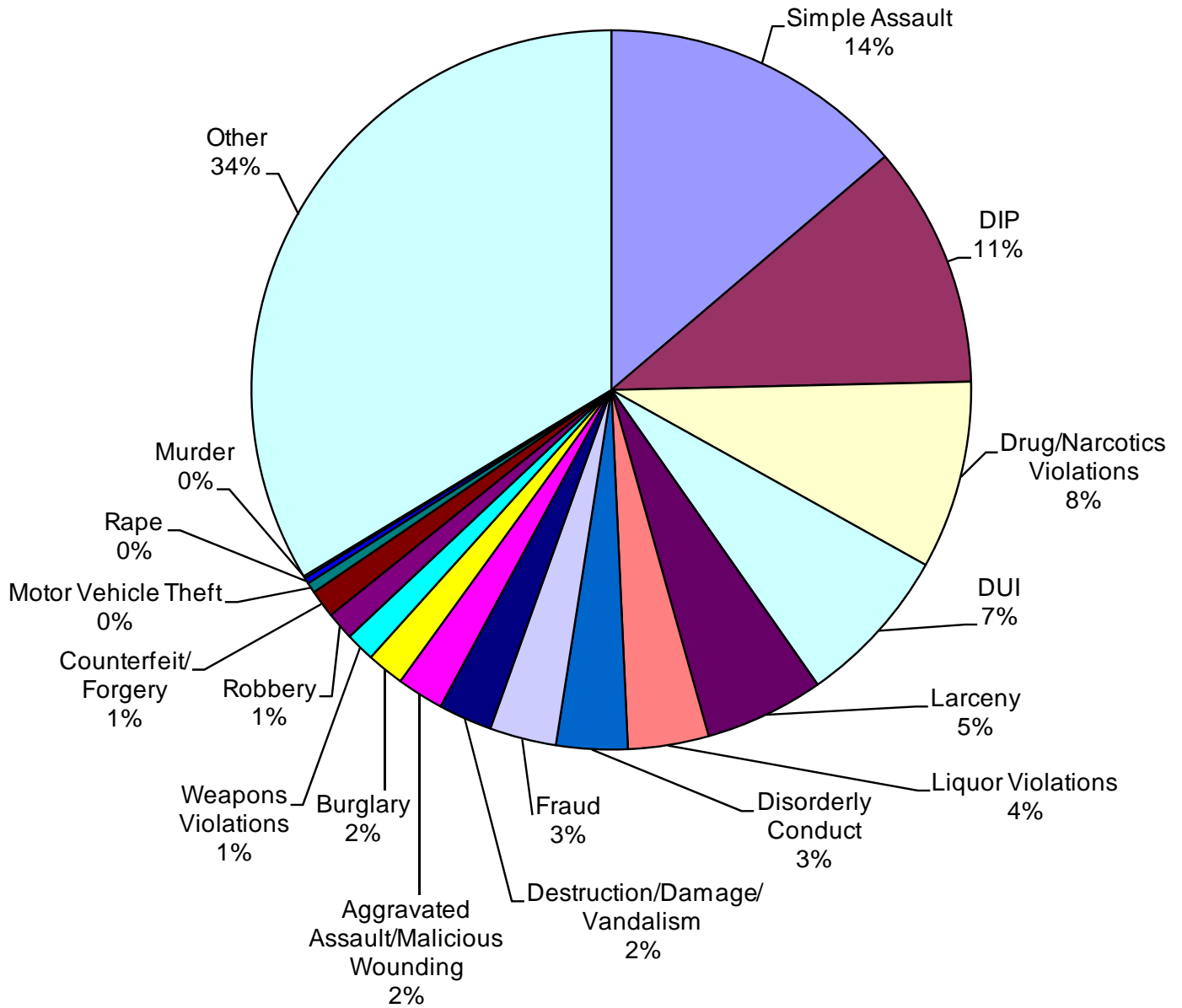
1445 people were arrested with a total of 1904 arrest charges.

Total arrest charges have decreased from 2271 in 2009 to 1904 in 2010. This is a decrease of 16% (367 less arrest charges).

Adult arrest charges have decreased by 369, 17%. Juvenile arrest charges have increased by 2, 2%.

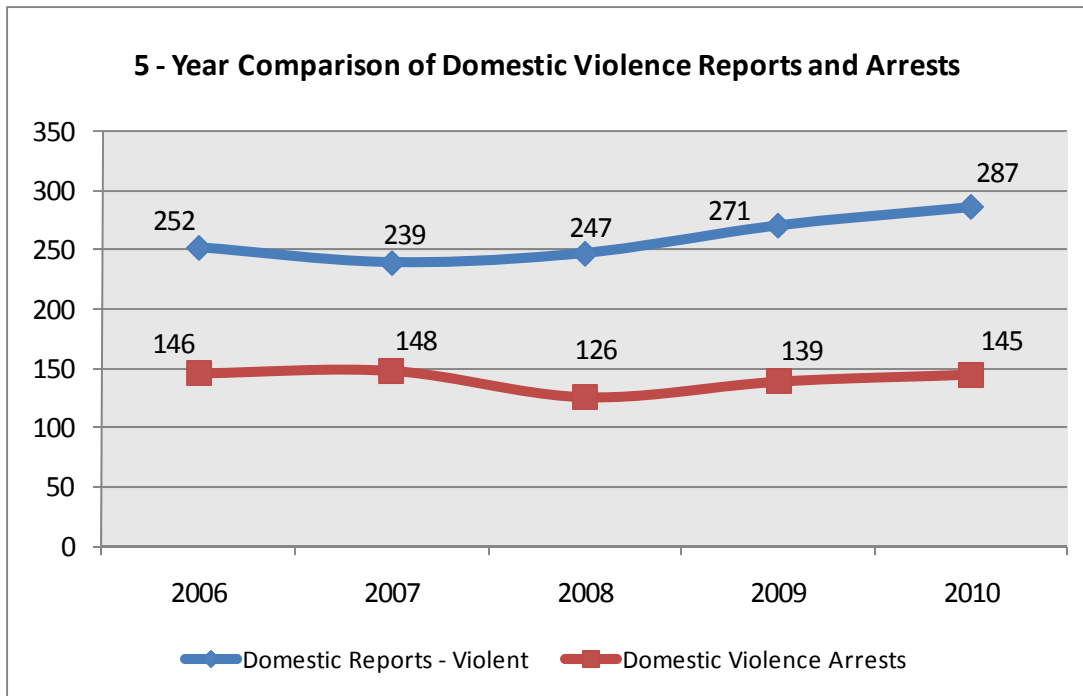
ARREST CHARGES

2010 Arrest Charges



DOMESTIC REPORTS AND ARRESTS

	2006	2007	2008	2009	2010	Amt of Change 09-10	Rate of Change 09-10
Domestic Reports - Violent	252	239	247	271	287	16	6%
Domestic Reports - Non-Violent	317	390	358	350	376	26	7%
Total Domestic Reports	569	629	605	621	663	42	7%
Domestic Violence Arrests	146	148	126	139	145	6	4%
Percentage of Violent Domestic Reports that resulted in an Arrest	58%	62%	51%	51%	51%		



Domestic reports have increased by 7% in 2010 compared to 2009, a difference of 42.

The 5-year average of Domestic reports is 617.

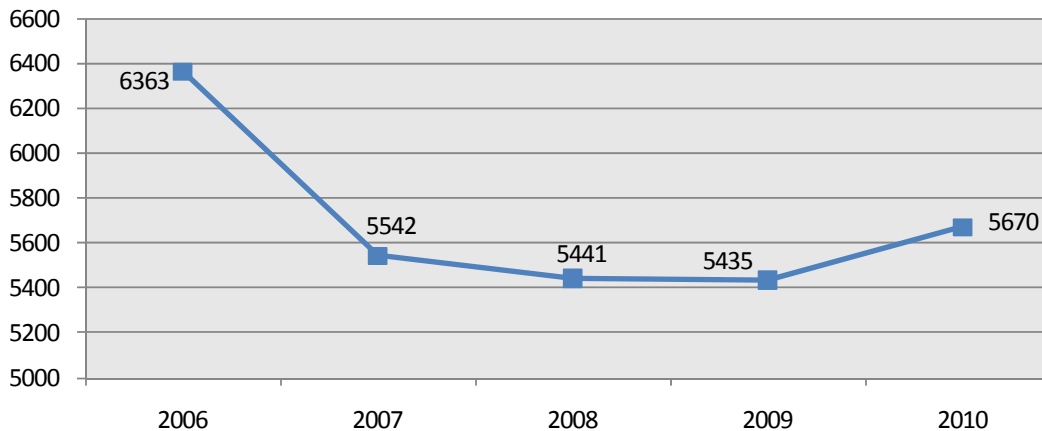
Domestic Violence arrests have increased by 4% in 2010 when compared to 2009, a difference of 6 arrests.

The 5-year average of Domestic Violence arrests is 141.

TRAFFIC TICKETS

	2006	2007	2008	2009	2010	Amt of Change 09-10	Rate of Change 09-10
Speeding	1377	855	1080	1010	1237	227	22%
Reckless Driving	420	329	345	229	182	-47	-21%
Suspended O/L	482	401	374	434	410	-24	-6%
Disregard Stop Sign	237	347	195	232	346	114	49%
Disregard Traffic Signal	178	131	181	222	266	44	20%
Other Traffic	3669	3479	3266	3308	3229	-79	-2%
Total Traffic	6363	5542	5441	5435	5670	235	4%

5 - Year Comparison of Traffic Tickets



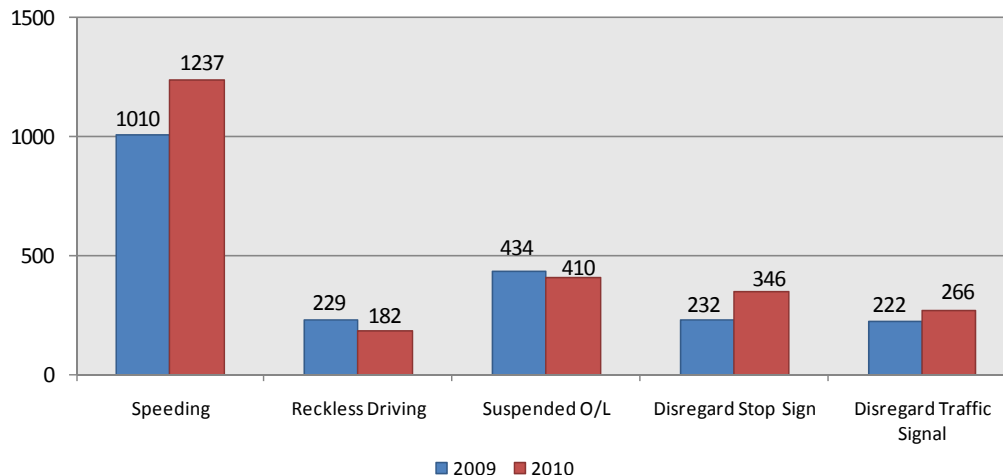
The total number of traffic tickets increased from 5435 in 2009 to 5670 in 2010, an increase of 235 tickets (4%).

The largest categorical increase has been in Disregard Stop Sign Violations which increased by 49% (114) over the previous year.

Other increases occurred in:

- ◆ Speeding (22%)
- ◆ Disregard Traffic Signal (20%)

2009 - 2010 Traffic Ticket Comparison

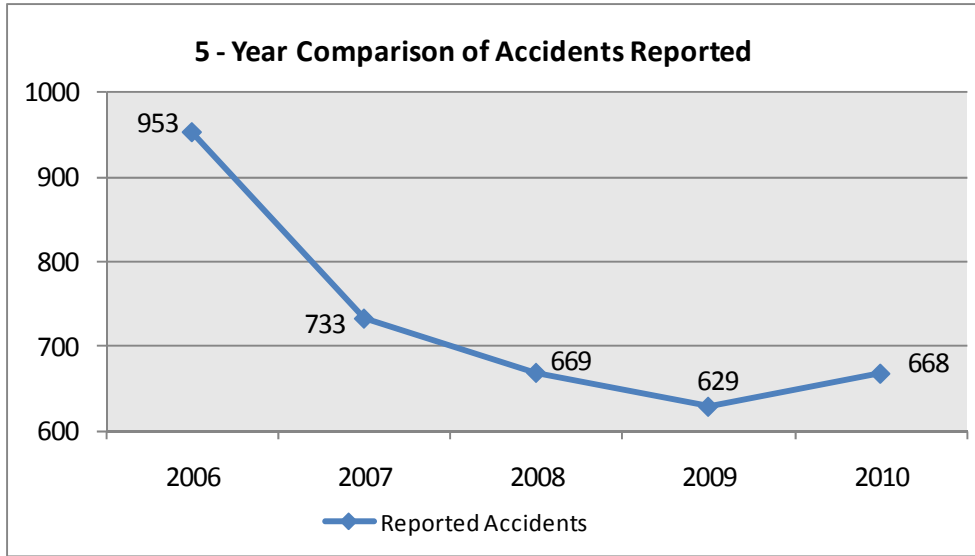


Our largest categorical decrease has been in Reckless Driving violations which decreased by 21% (47) over 2009.

The only other decrease occurred in Suspended O/L violations, which decreased from 434 to 410 tickets, 6%.

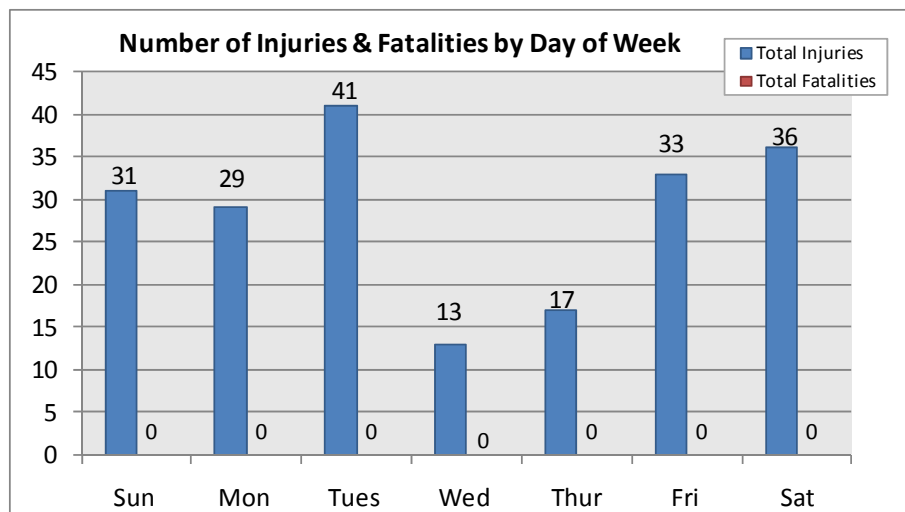
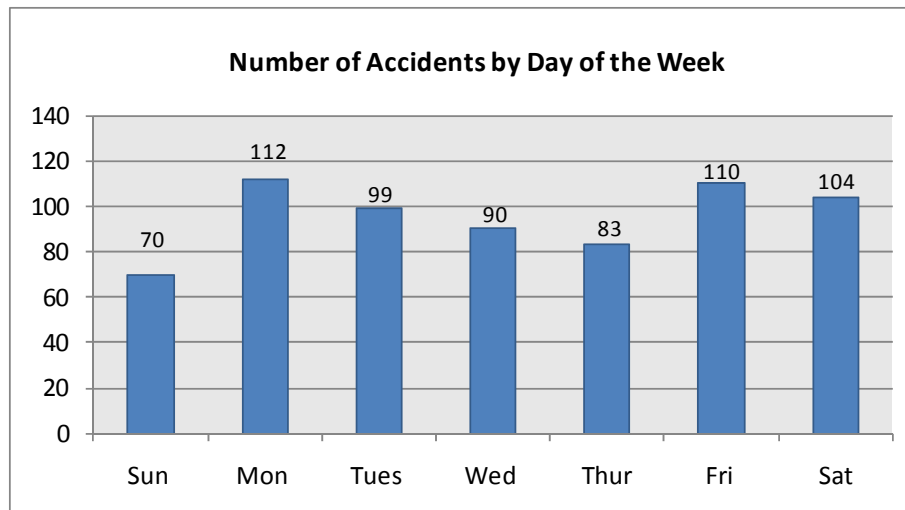
The 5-year average of Traffic Tickets cited is 5690.

ACCIDENTS



The total number of accidents increased from 629 in 2009 to 668 in 2010, an increase of 6% (39).

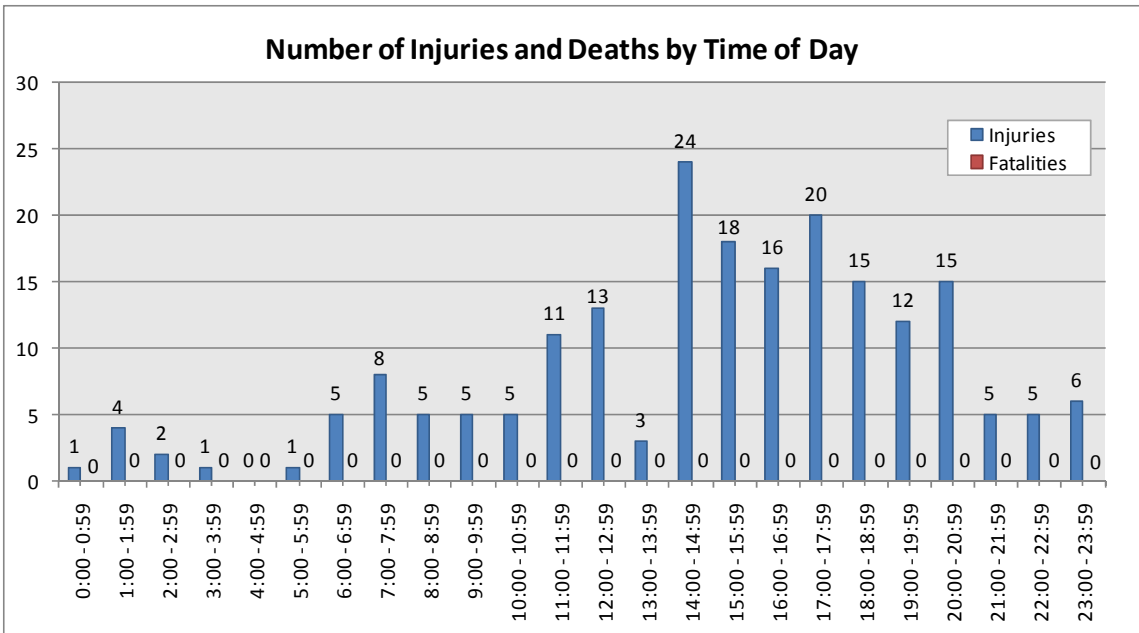
The five year average of accidents is 730.



In 2009, the day with the highest number of accidents was Monday with 112 accidents. In 2009 the day with the highest number of accidents was Friday with 120. Friday had the 2nd highest number of accidents with 110. Sunday, like in 2009, had the least number of accidents with 70.

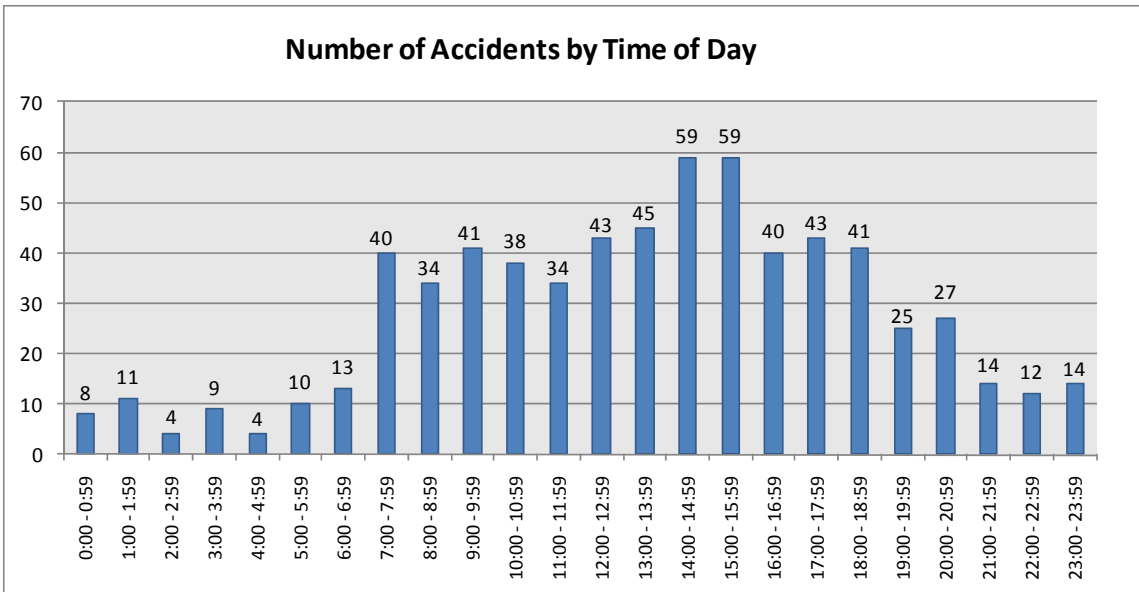
The day with the most number of injuries was Tuesday with 41. There were no fatalities in 2010.

ACCIDENTS



THE DAY AND TIME IN WHICH MOST ACCIDENTS OCCURRED IN 2010:

MONDAY AROUND 2:00 PM



In 2010 the most number of accidents, 59, occurred between the hours of 2:00 PM and 3:00 PM and between the hours of 3:00 PM to 4:00 PM, followed by 45 accidents occurring between the hours 1:00 and 2:00 PM.

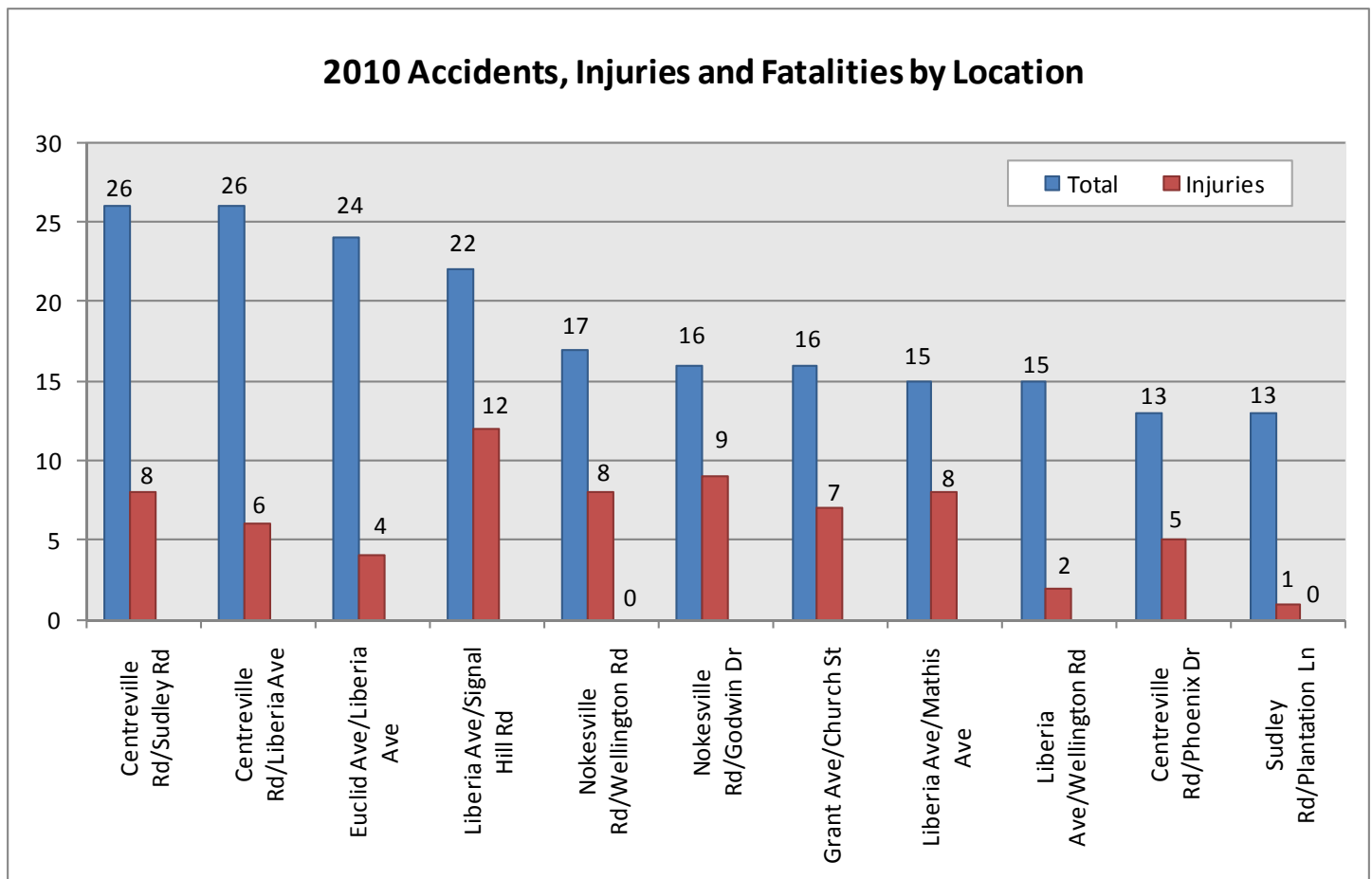
In 2009, the hours of 3:00 PM to 4:00 PM had the highest frequency of accidents.

ACCIDENTS BY LOCATION

Location	Total	Injuries	Fatalities
Centreville Rd/Sudley Rd	26	8	0
Centreville Rd/Liberia Ave	26	6	0
Euclid Ave/Liberia Ave	24	4	0
Liberia Ave/Signal Hill Rd	22	12	0
Nokesville Rd/Wellington Rd	17	8	0
Nokesville Rd/Godwin Dr	16	9	0
Grant Ave/Church St	16	7	0
Liberia Ave/Mathis Ave	15	8	0
Liberia Ave/Wellington Rd	15	2	0
Centreville Rd/Phoenix Dr	13	5	0
Sudley Rd/Plantation Ln	13	1	0
TOTAL	203	70	0

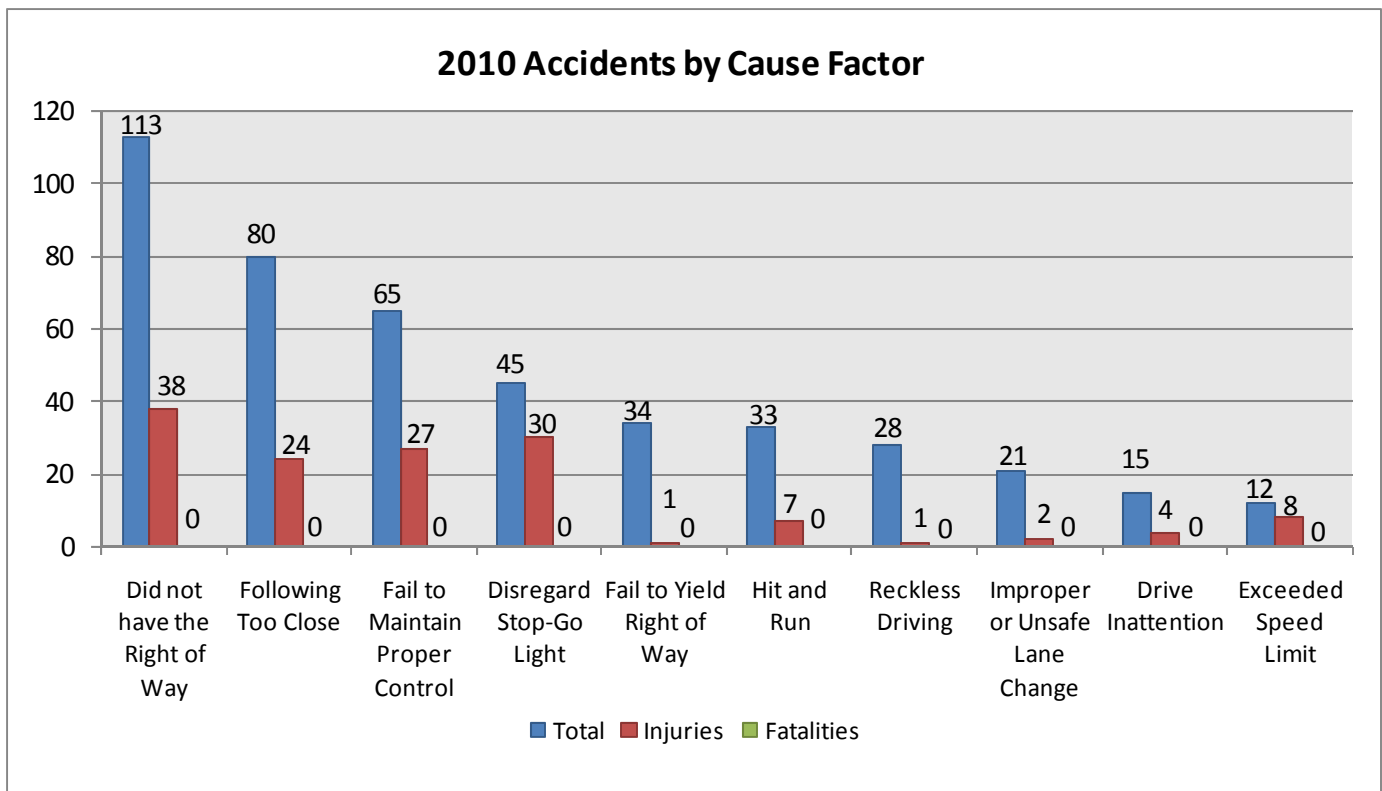
The intersections with the highest number of accidents in 2010 were Centreville Road and Sudley Road and the intersection of Centreville Road and Liberia Avenue with 26 accidents each. In 2009 the intersection of Centreville Road and Liberia Avenue reported the highest number with 35 accidents. Euclid Avenue and Liberia Avenue had the second highest number of accidents with 24.

2010 Accidents, Injuries and Fatalities by Location



ACCIDENTS BY CAUSE FACTOR

Cause Factor	Total	Injuries	Fatalities
Did not have the Right of Way	113	38	0
Following Too Close	80	24	0
Fail to Maintain Proper Control	65	27	0
Disregard Stop-Go Light	45	30	0
Fail to Yield Right of Way	34	1	0
Hit and Run	33	7	0
Reckless Driving	28	1	0
Improper or Unsafe Lane Change	21	2	0
Drive Inattention	15	4	0
Exceeded Speed Limit	12	8	0



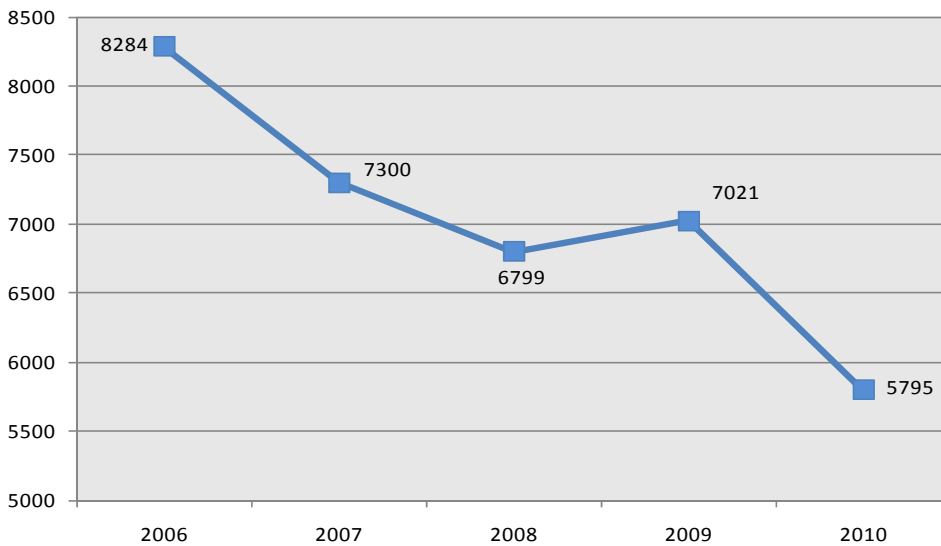
The most frequent cause of accidents was attributable to Drivers who Did not have the Right of Way, 113 incidents, followed by Following Too Close with 80 incidents. Drivers who Did not have the Right of Way were also the number one cause factor from 2004 to 2009.

Of the 113 accidents that Drivers did not have the Right of Way in 2010 there were 38 injuries.

PARKING TICKETS

Type of Ticket	2006	2007	2008	2009	2010	Amt of Change 09-10	Rate of Change 09-10
No Parking	1096	1018	888	1107	1084	-23	-2%
Overtime Parking	886	829	1233	1028	1002	-26	-3%
Yellow Curb	350	409	196	282	335	53	19%
No Current State License	1471	1257	1027	1337	1317	-20	-1%
No Current City Sticker	1626	1395	850	944	632	-312	-33%
Other Parking	2855	2392	2605	2323	1425	-898	-39%
Total	8284	7300	6799	7021	5795	-1226	-17%

5 - Year Comparison Parking Tickets



The total number of parking tickets decreased from 7021 in 2009 to 5795 in 2010, a decrease of 1226 parking tickets (17%).

The only increase occurred in Yellow Curb Violations which has increased by 19% (53) over the previous year.

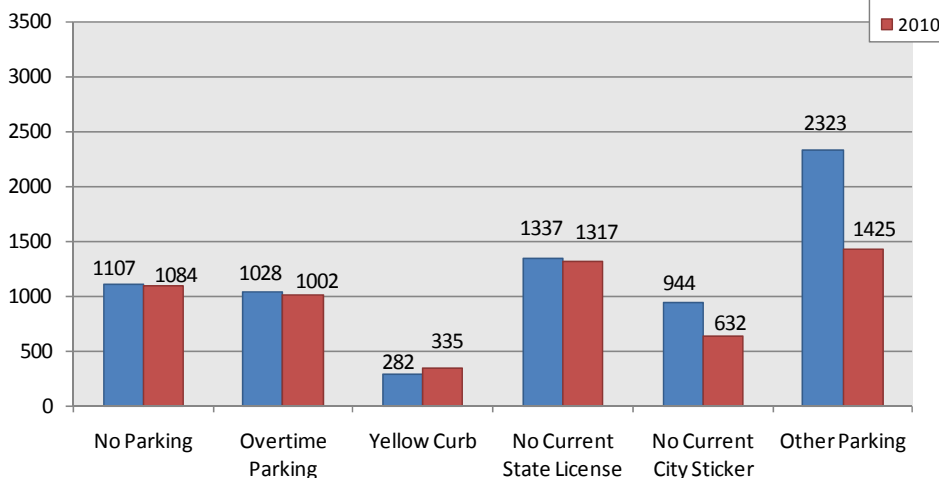
* The largest decrease occurred in No Current City Sticker Violations which has decreased by 33% (312) since the previous year.

Other decreases were noted in:

- ◆ Overtime Parking (3%)
- ◆ No Parking (2%)
- ◆ No Current State License (1%)

The 5-year average of Parking Tickets cited is 7040.

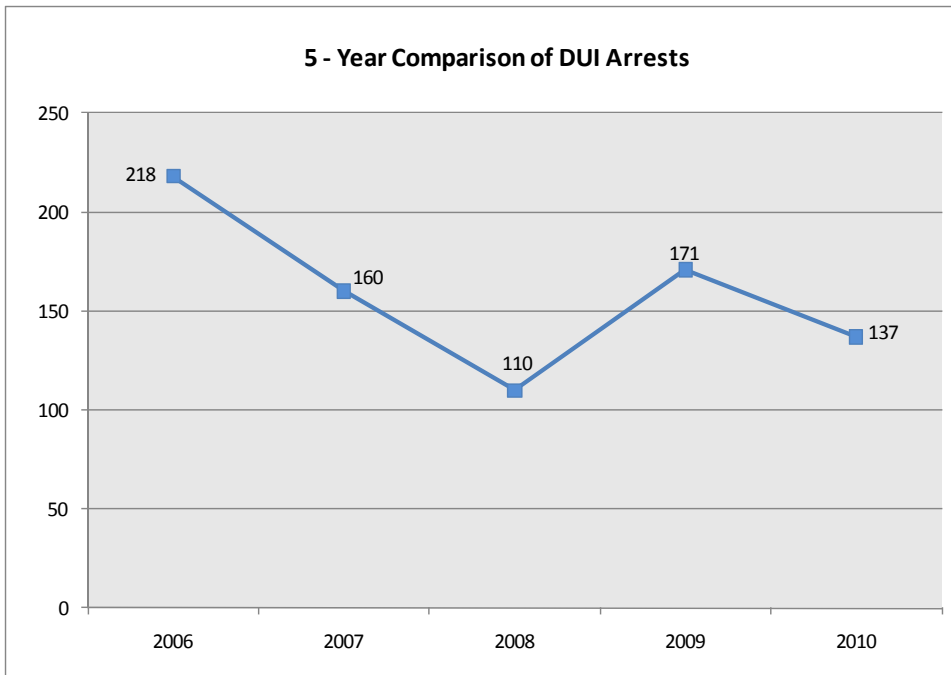
2009 - 2010 Parking Ticket Comparison



DRIVING UNDER THE INFLUENCE (DUI)

2006	2007	2008	2009	2010	Amt of Change 09-10	Rate of Change 09-10
218	160	110	171	137	-34	-20%

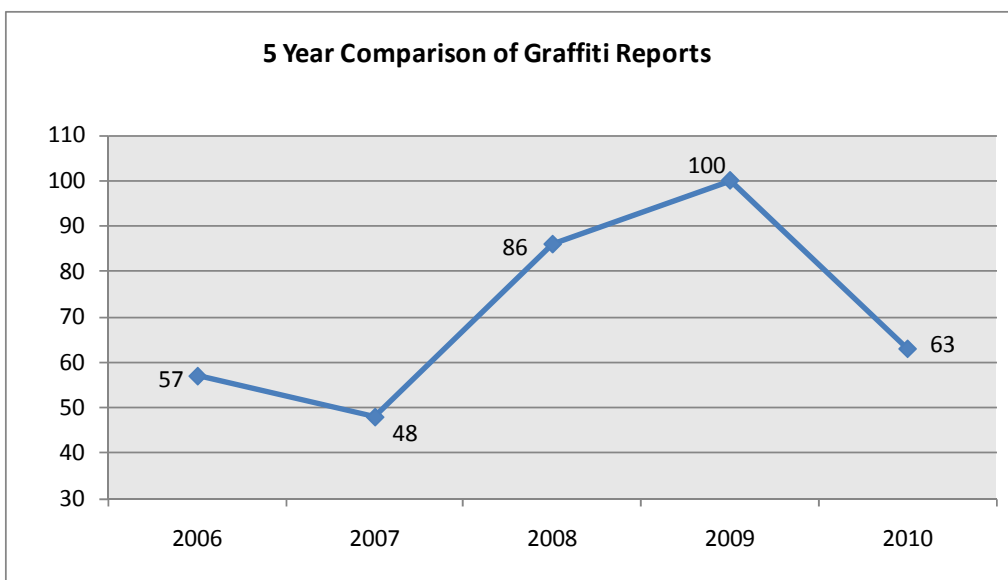
The number of DUI arrests decreased from 171 in 2009 to 137 in 2010, a 20% (34) change.



GRAFFITI

2006	2007	2008	2009	2010	Amt of Change 09-10	Rate of Change 09-10
57	48	86	100	63	-37	-37%

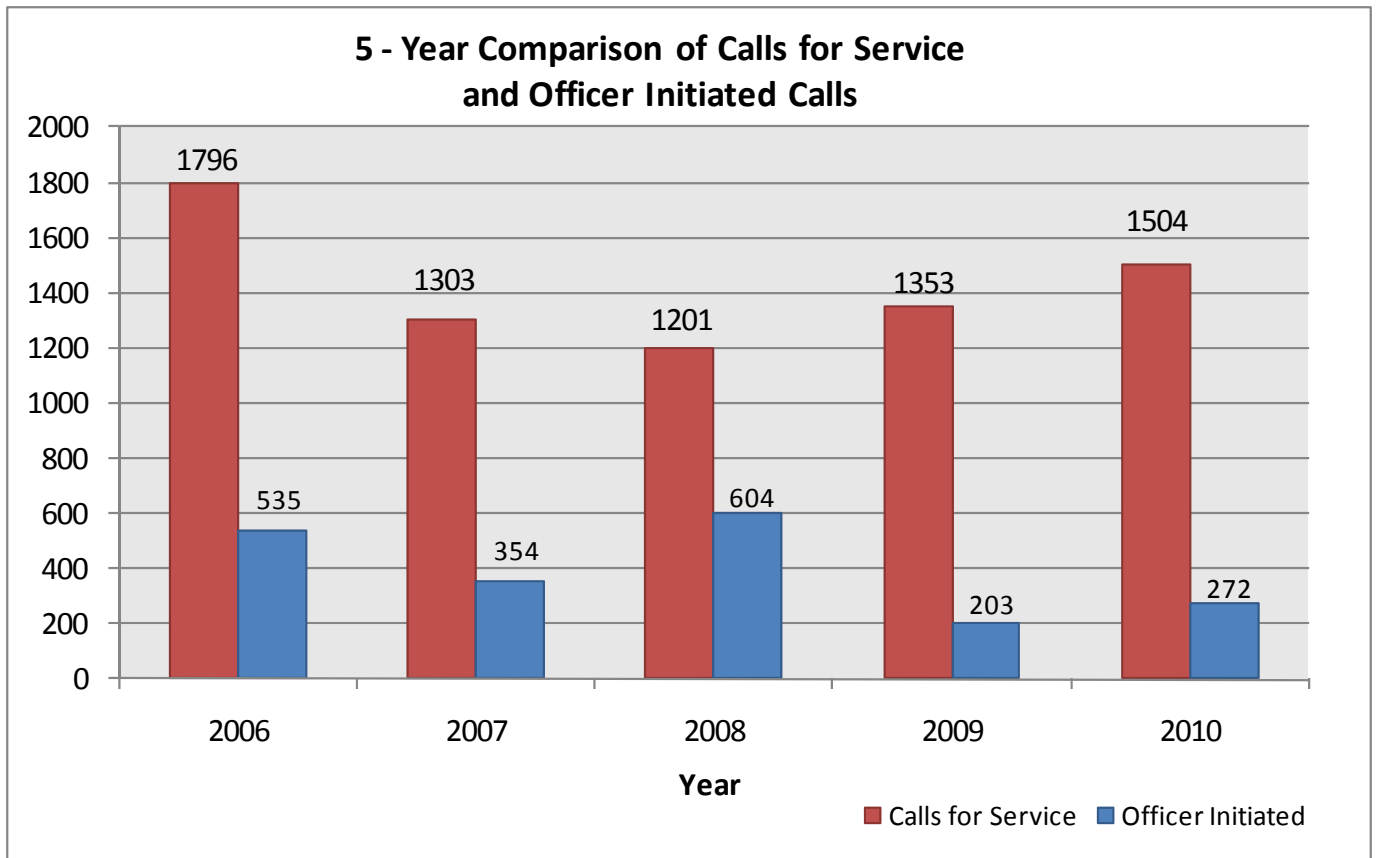
The number of Graffiti reports has decreased from 100 in 2009 to 63 in 2010, a 37% (37) decrease.



Graffiti attributable to suspected gang activity decreased from 32 to 15 incidents while general graffiti, including tagging, decreased from 57 to 39 incidents.

ANIMAL CONTROL

	2006	2007	2008	2009	2010	Amt of Change 09-10	Rate of Change 09-10	Average
Calls for Service	1796	1303	1201	1353	1504	151	11%	1431
Officer Initiated	535	354	604	203	272	69	34%	394



The total number of Animal-related Citizen Complaints has increased from 1353 in 2009 to 1504 in 2010, an 11% (151) increase.

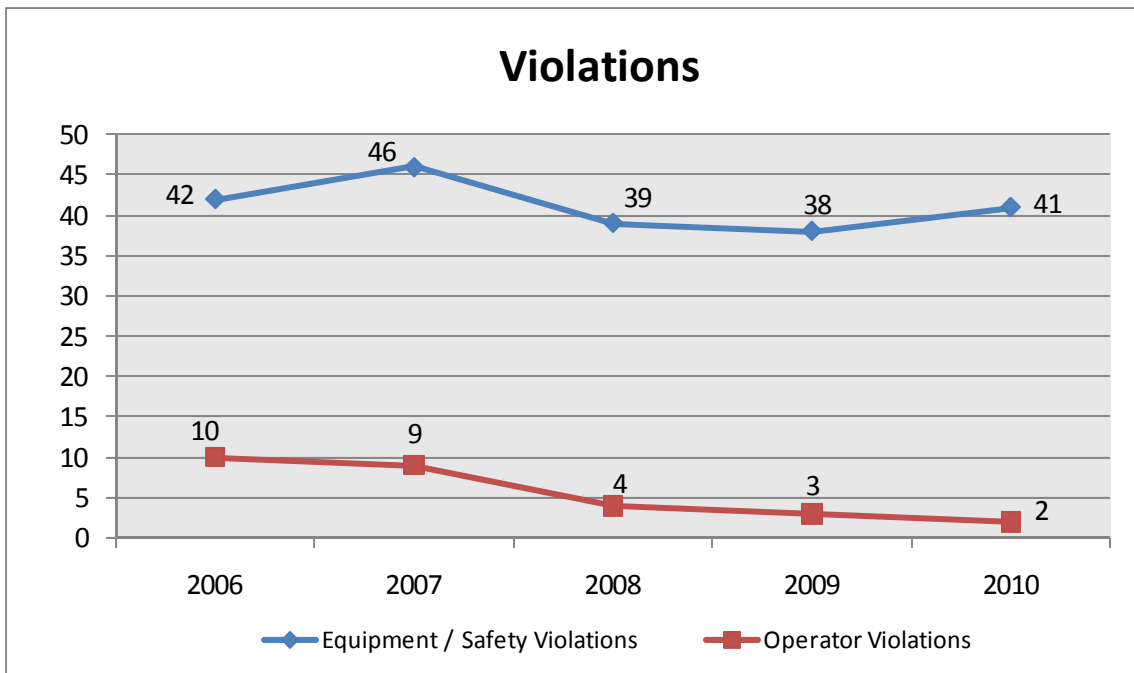
The 5-year average of Animal-related Citizen Complaints is 1431.

The total number of Officer Initiated Animal Calls has increased from 203 in 2009 to 272 in 2010, a 34% (69) increase.

The 5-year average of Officer Initiated Animal Calls is 394.

MOTOR CARRIER SAFETY

	Total Inspections	Units With Violations	Equipment / Safety Violations	Operator Violations	Units Without Violations	Units Placed Out of Service
2006	145	56	42	10	89	11
2007	121	39	46	9	88	5
2008	129	39	39	4	90	2
2009	72	27	38	3	45	1
2010	67	35	41	2	32	0



The total number of truck inspections decreased by 7% (5) in 2010 compared to 2009.

Total Violations increased by 5% (2). Equipment/Safety Violations increased by 8% (3) and Operator Violations decreased by 33% (1).

2010 Annual Statistical Report

Douglas W. Keen

Chief of Police

Prepared by Deb Nash

Crime Analysis Unit

Administrative Services Division

(CALEA Standard 11.4.1; 15.1.1)